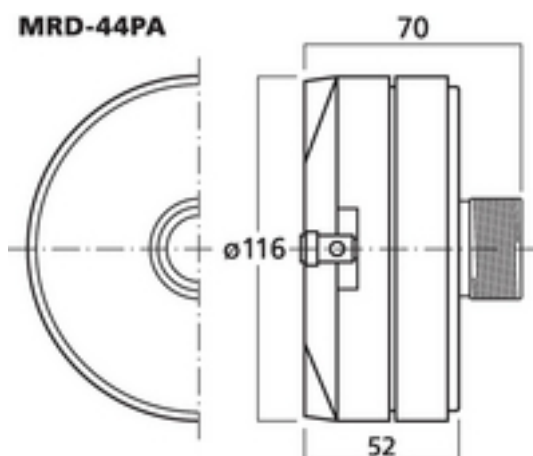
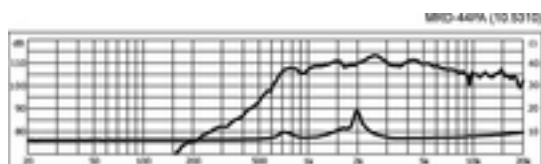
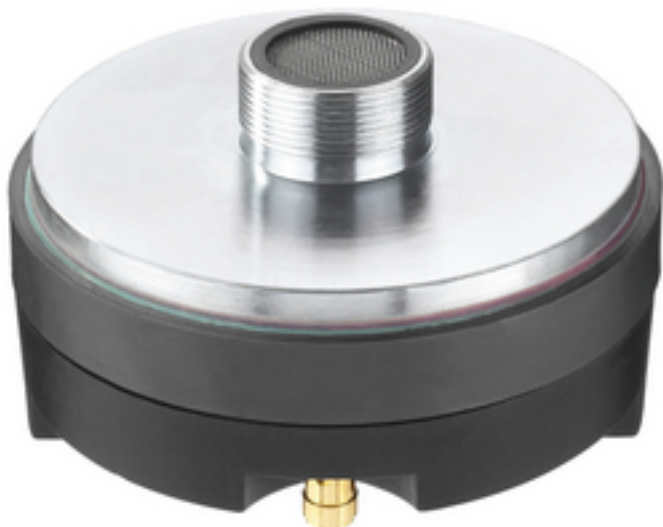


MRD-44PA - Horn Driver



PA horn driver, 45 W, 8 Ohm

- 35 mm (1 1/4") standard thread
- Component of the speakers PAB-115MK2 and PAK-115MK2
- Matching replacement voice coil PAB-115/VC available at option
- Suitable for horns MRH-83, MRH-170 and MRH-80

Tekniske data

| | |
|---|---------------------------------|
| Impedance (Z) | : 8 Ohm |
| Transmission method | : - |
| Frequency range | : fx-20,000 Hz |
| Resonant frequency (fs) | : 2 kHz |
| Rec. crossov. frequ. (fmax.) (12 dB/oct.) | : 3,500 Hz |
| Power rating (RMS) | : 45 W |
| Peak music power output (MAX) | : 90 W |
| Sensitivity | : 105 dB/W/m |
| Max. rated SPL | : - |
| Max. voltage | : - |
| Radiation angle, horizontal | : - |
| Radiation angle, vertical | : - |
| Suspension compl. (Cms) | : - |
| Moving mass (Mms) | : - |
| Mech. Q factor (Qms) | : - |
| Electr. Q factor (Qes) | : - |
| Total Q factor (Qts) | : - |
| Equivalent volume (Vas) | : - |
| DC resistance (Re) | : - |
| Force factor (BxL) | : - |
| Voice coil induct. (Le) | : - |
| Voice coil diameter | : $\tilde{\sim}$ 44.5 mm |
| Voice coil former | : - |
| Linear excursion (X _{MAX}) | : - |
| Eff. cone area (Sd) | : - |
| Magnet weight | : - |
| Magnet diameter | : $\tilde{\sim}$ 110 mm |
| Mounting cutout | : dep. on horn |
| Mounting depth | : dep. on horn |
| Mounting hole diameter | : - |
| Hole spacing X-axis | : - |
| Hole spacing Y-axis | : - |
| Dimensions | : $\tilde{\sim}$ 116 mm x 70 mm |
| Outside diameter | : $\tilde{\sim}$ 116 mm |
| Width | : $\tilde{\sim}$ 116 mm |



| | |
|-----------------------|------------|
| Height | : - |
| Depth | : 70 mm |
| Protective class | : - |
| Admiss. ambient temp. | : 0-40 °C |
| Weight | : 1.472 kg |
| Packing unit | : 1 |
| Type of speaker | : - |